

The Ultimate College Checklist

Below are the suggested items that students should bring when packing for college. All items are OPTIONAL, but highly suggested.

Dorm Room Supplies

Bed sheets- Twin Extra Long
Blankets
Comforter
Mattress Pad
Pillowcases
Pillows
Storage Containers
TV
Coaxial Cable – 1 Cable connection in Unit
Storage Containers
Power Strip (UL approved)
Waste Basket

**** Please note: that beds do rise/lower, there is NO need for bed risers or center blocks. Each room is equipped with a Microwave and Mini Fridge****

Desk Essentials

Desk Lamp
Desk Organizers
Pens/Pencils
Scissors
Stapler/Staples
Tape
Pictures
Printer

Bathroom Supplies

Bath Towels
Shower Caddy
Shower Curtain/Hooks
Shower Mat
Toilet paper
Cleaning Supplies- Clorox wipes, Pine sole, Scrubbing Bubbles, etc.
Paper towels
Toiletries

**** Please NOTE that 'students' are responsible for cleaning their own bathrooms****

Laundry

Detergent
Fabric Softener
Hamper/Bag
Hangers
Dryer Sheets
Iron/ Ironing Board
Quarters/ Retail Points

****Please note: that laundry facilities are in student's resident halls and is \$1.25 to wash and dry. Also when packing clothes for college, most students bring summer/ fall clothing when they move in. When students go home for Thanksgiving Break swap clothing out for winter attire****

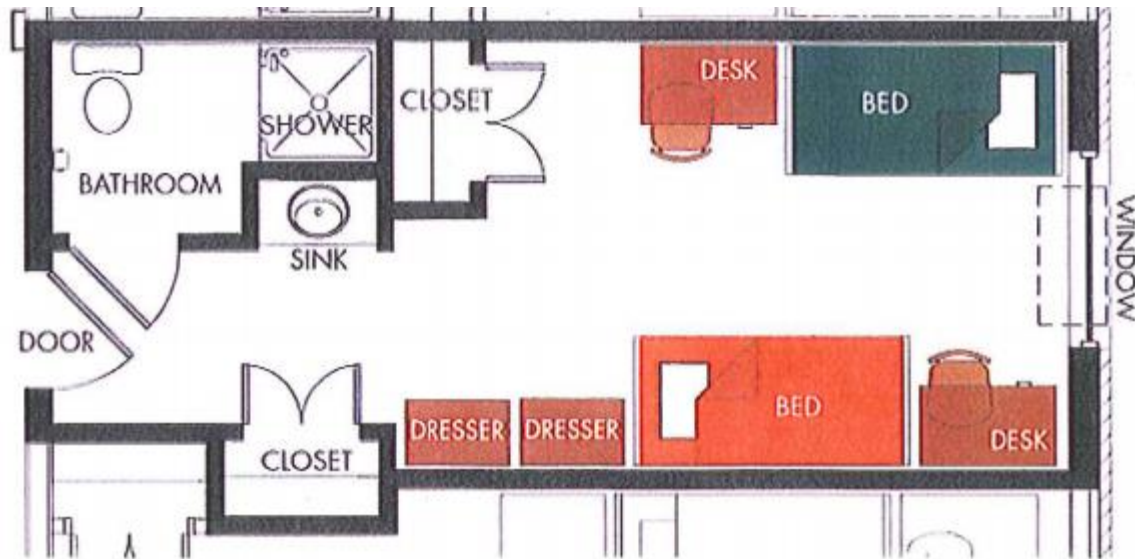
Food Supplies

Bottled Water
Juice
Milk
Breakfast Food (granola bars, cereal, etc.)
Snacks (Ramen, chips, cookies, etc.)
Frozen foods (Hot pockets, pizza rolls)

WHAT SHOULD I LEAVE AT HOME?

- Candles, Incense (or anything with an open flame)
- Any Electrical Cooking Appliance
- Space Heaters (or anything with an open heating element)
- Mini Refrigerators / Freezers
- Microwaves
- Air Conditioners
- Cinder Blocks
- Pets (except fish—tanks cannot be larger than 10 gallons and may not have electrical equipment)
- Extension Cords
- Halogen Lamps / Multi-Arm Lamps (with plastic shades)
- Amplifiers, Drums, etc
- Weapons

Room Layout & Dimensions



What Size is it?

Mattress

Extra Long Twin (36" x 80')

To avoid the \$160 replacement cost, a padded or quilted mattress cover is recommended.

Bed Height

Beds are adjustable (up and down) to provide storage underneath (bed raises to 36")

Windows

58' x 58' (blinds will be provided)

Shower

A 6' x 6' curtain fits nicely. Hooks for shower curtains

What is included in the room?

- Heat and A/c is a controlled unit
- (2) Desk, (2) Drawers, (2) Closets, (2) Beds
- Sink with cabinets and Drawers underneath
- Shower and toilet
- Room is carpeted
- Blind package provided
- Microwave and Mini-fridge
- Cable jack

What in the Lobby?

- Front desk
(Please note: if student misplaces key or Onecard they need to check in with front desk. It is \$80 to replace a lost key and Onecards can be replaced at the Union for \$15)
- Student mailboxes (student room keys open mailboxes)
- Water fountains
- Vacuums
- Vending machine (1st floor in Paca & Lower Level in Tubman)
- Kitchen (equipped w/ oven, stove, microwave, and full size refrigerator)
- ATM machines (1st floor in Paca & Lower Level in Tubman)
- Laundry Facilities (1st floor in Paca & Lower Level in Tubman)
- Common Area with TV (in addition each floor is equipped with community lounges and quiet lounges)
- Multipurpose Room (white boards, ping-pong table, tables and chairs)